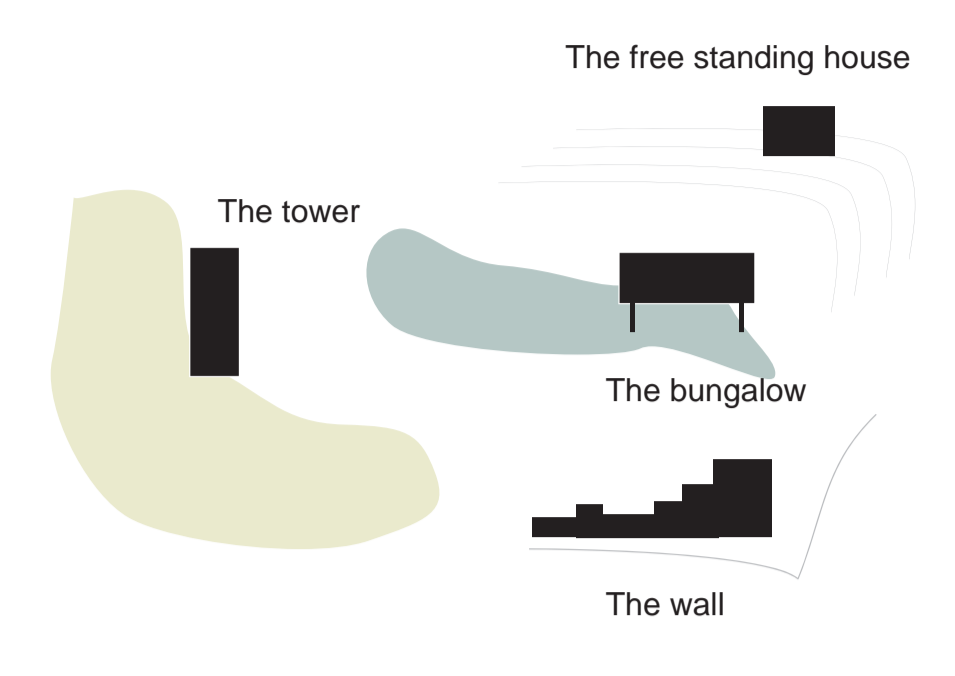
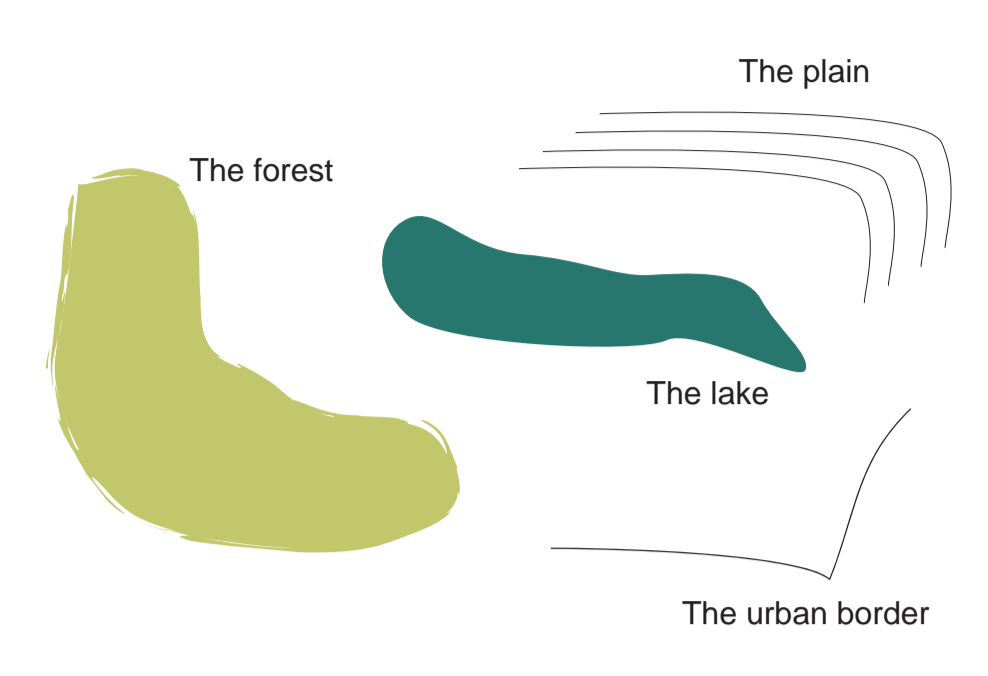
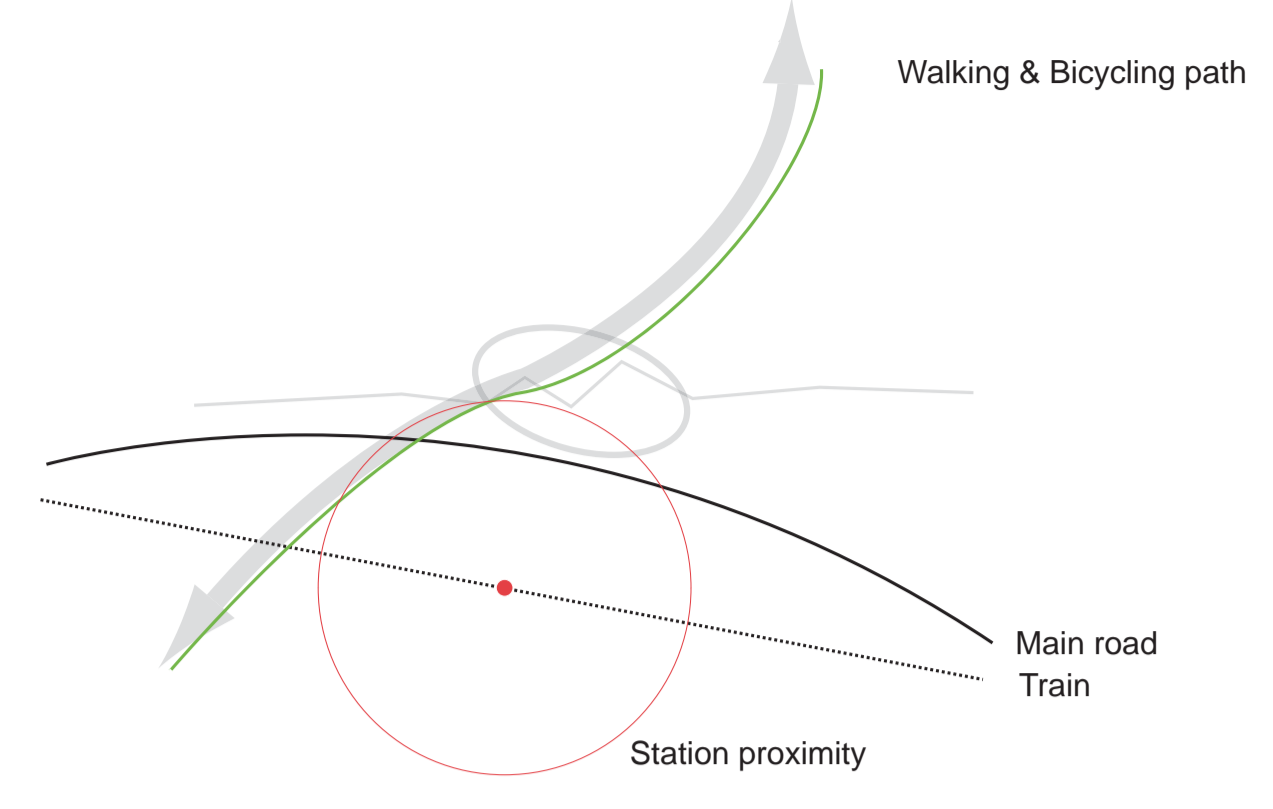
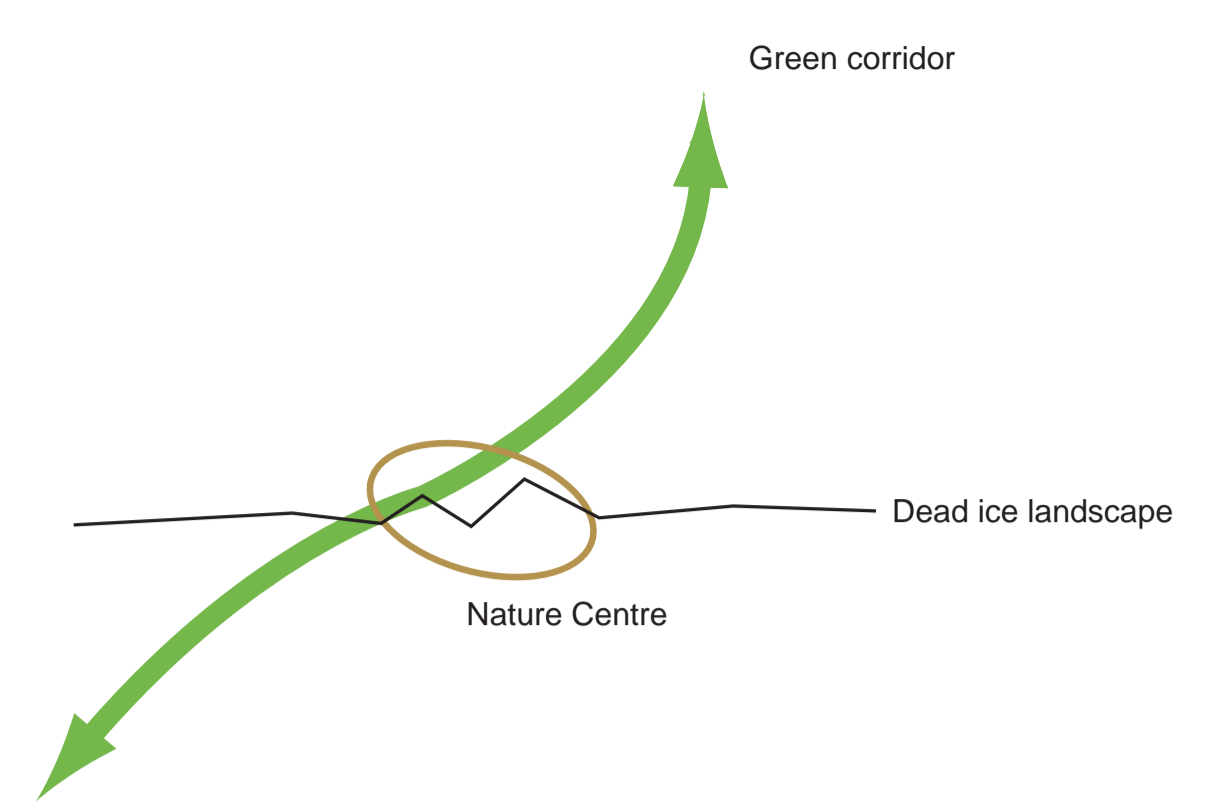
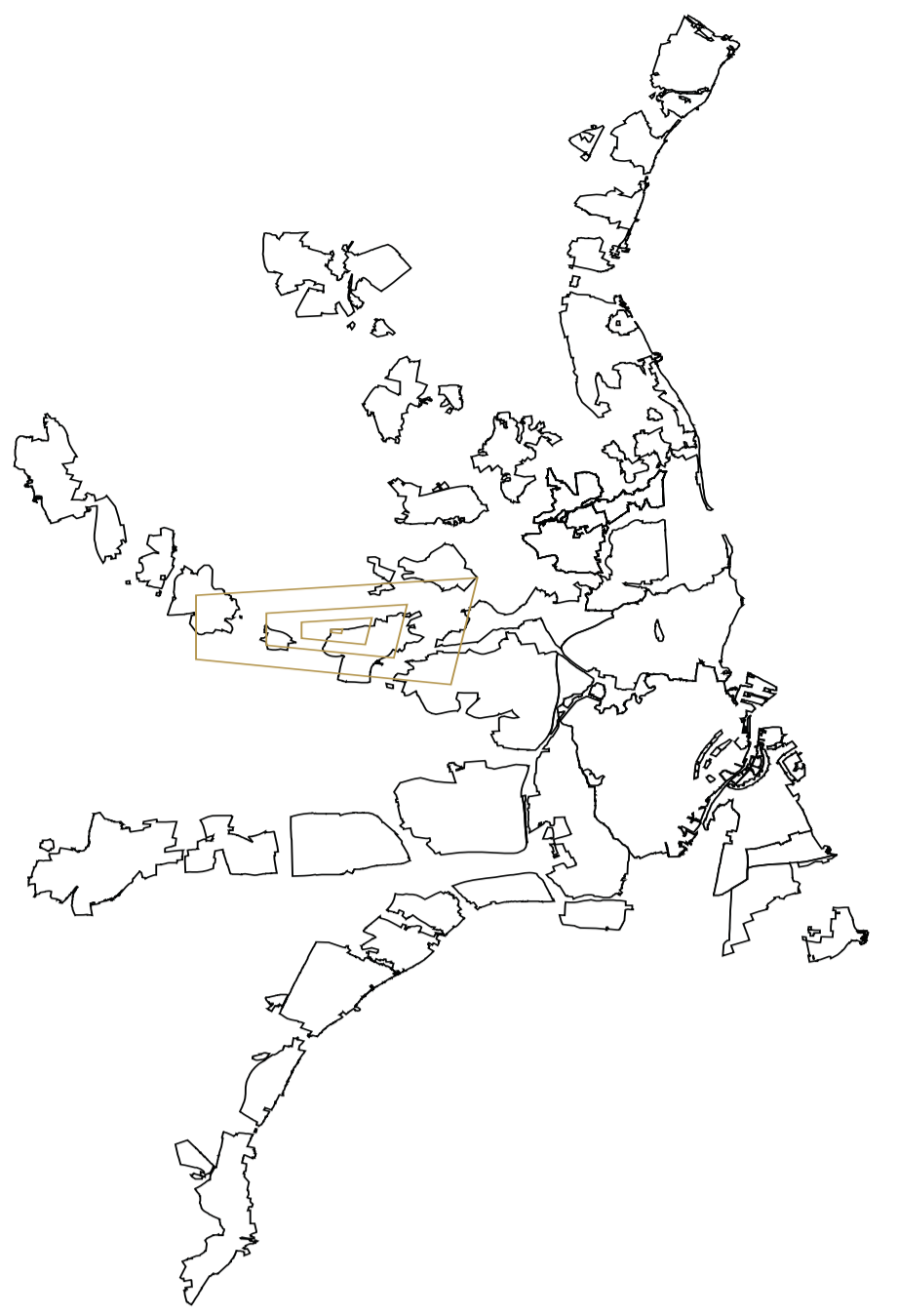


NATURE CENTRE KILDEDAL



Plan 1:2000

ACTIVITIES

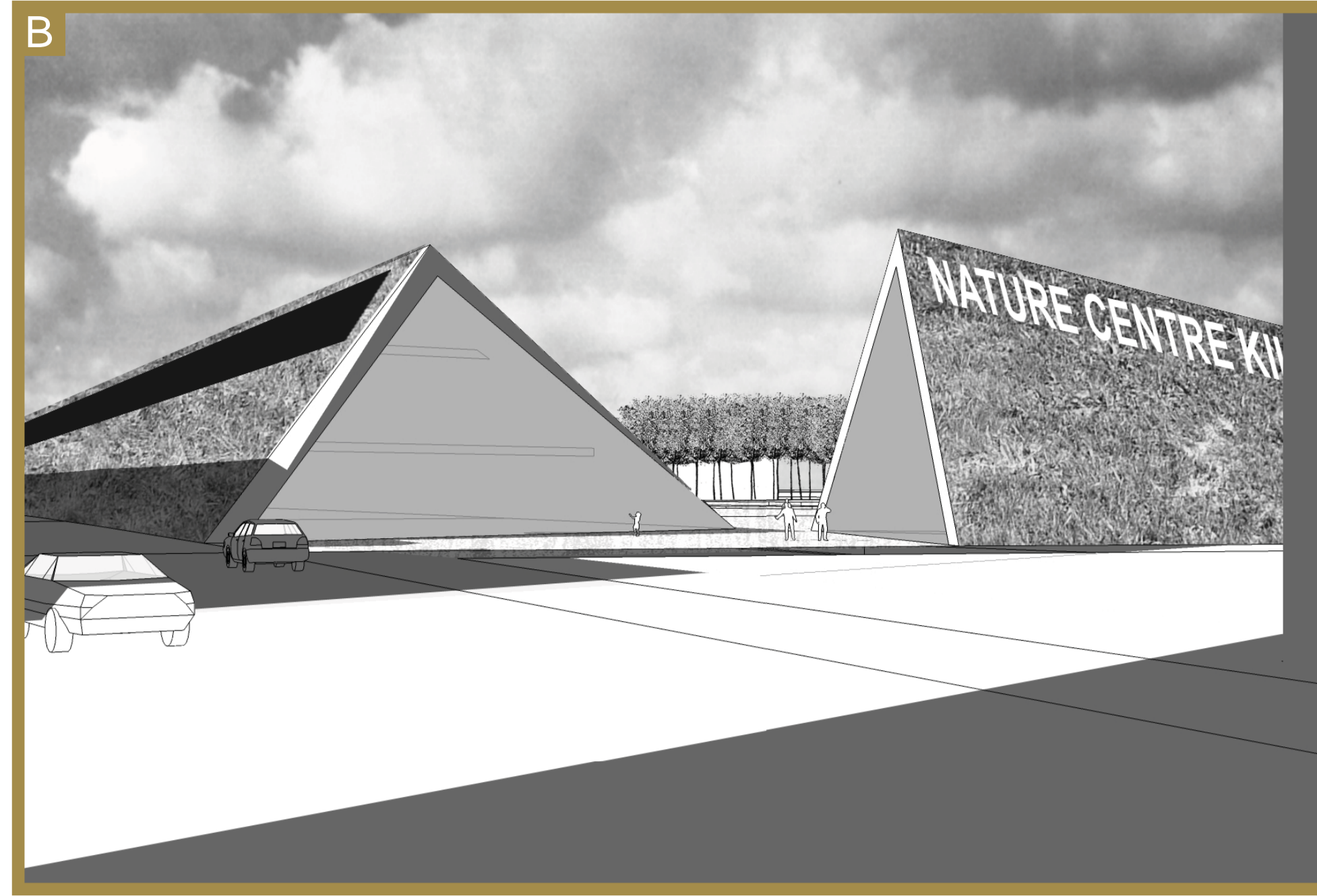
- 1 Nature Centre with administration, parking and outdoor shops
- 2 Restaurant, kiosk and mountain bike rental shop
- 3 Raft construction area
- 4 Tree climbing course
- 5 Fishing introduction/ activity

- 6 Outdoor life / survival skills
- 7 Fishing & outdoor cooking area
- 8 Hunting towers
- 9 Free outdoor night shelter and fireplace
- 10 Bird observation and local wildlife tower.

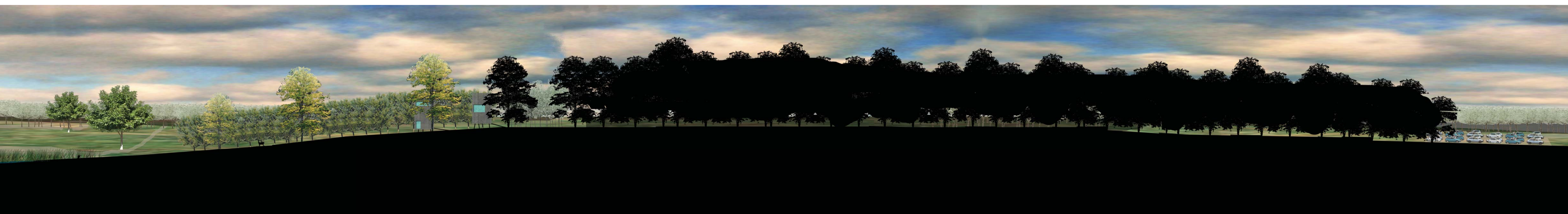
	Dark forest		Light forest		Build-up area		Water		Swamp/ lake grass area
--	-------------	--	--------------	--	---------------	--	-------	--	------------------------



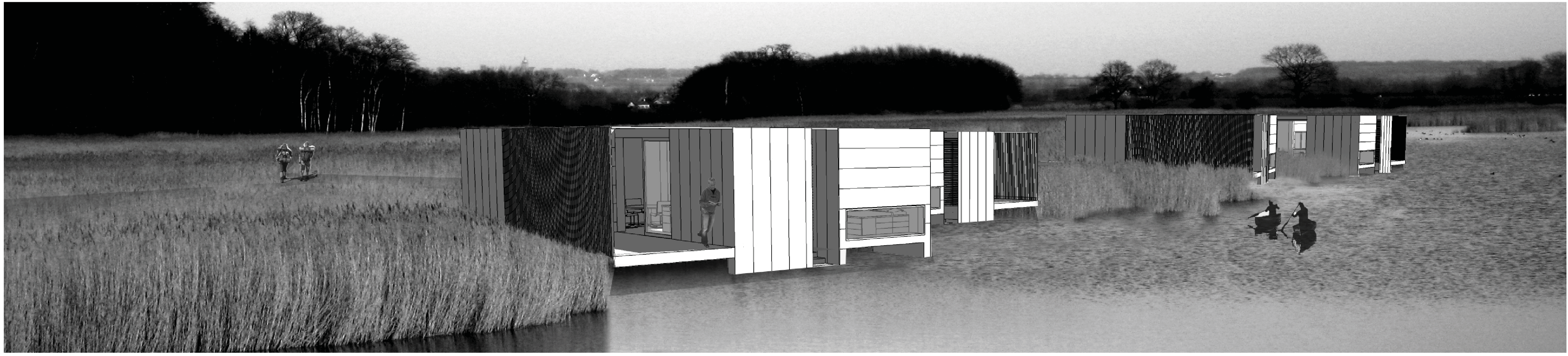
SECTION A-A 1:500



Plan 1:500



HOUSING UNITS



TYOLOGY

I believe that we can copy the qualities from the Beach house bungalow and transform it into a Danish variant.

Placed in context of small lakes, in the more subtle Scandinavian tradition of space and light I believe it is possible to create a new outdoor house typology that will meet different functions at different times of the year.

..It is about the small things



MATERIALS

Sustainability is important. Therefore I have chosen to work with materials and constructions that do as little damage to nature as possible.

Wooden frame with wooden interior cladding. Facade is made from wood/cement panels consisting of 70% wooden fibres.

Flax-insulation in the walls, floors and ceiling.

The materials creates contrasts from the dark Wood/cement panel to the White wooden interior cladding. Glued together with the warm colored Robinie wood that runs from the outside flooring to the inside.

Wetland grass & water



Wood/cement panel



White painted Pine wood



Robinie wood from Hungary



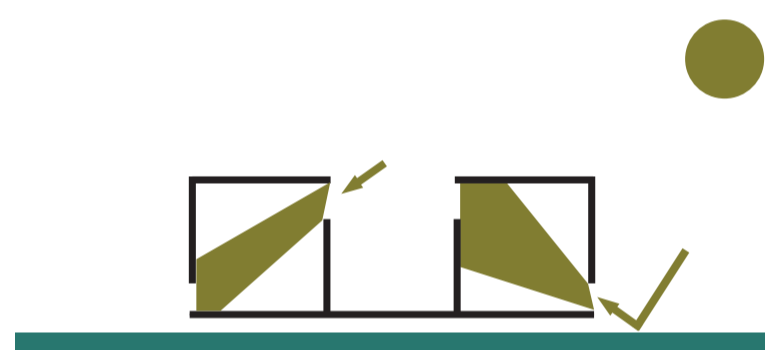
LIGHT

By introducing daylight in a systematic way I believe I can create light awareness.

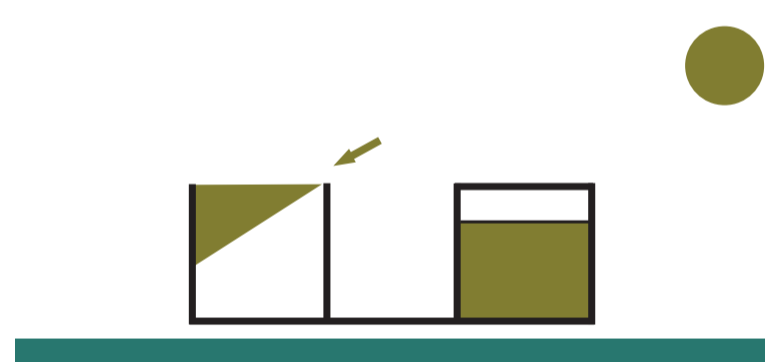
This is done through shades and the openings in the rooms.

The rooms Mirroring the light from the lake up into the bedrooms through a low placed window generates a dancing reflection from the water and the straws. The high placed opening lets the morning sun in, sculpting the light on the walls.

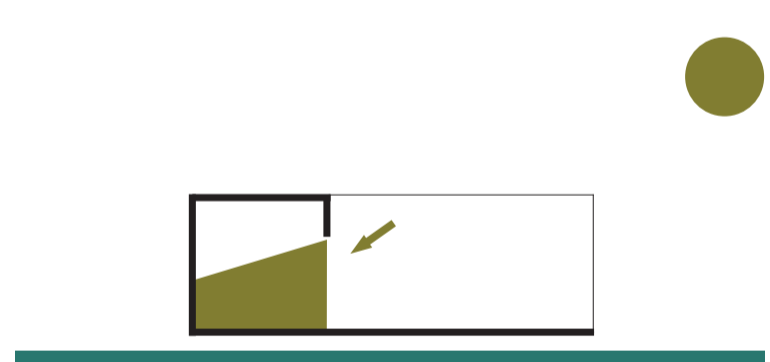
A full roof skylight in the bathroom creates the light of being outside, the experience is about how we read light. It is the same thing with the full side light.



High & low placed openings creates more light than view



Skylight & full side light are both ways of creating a light like "outside"

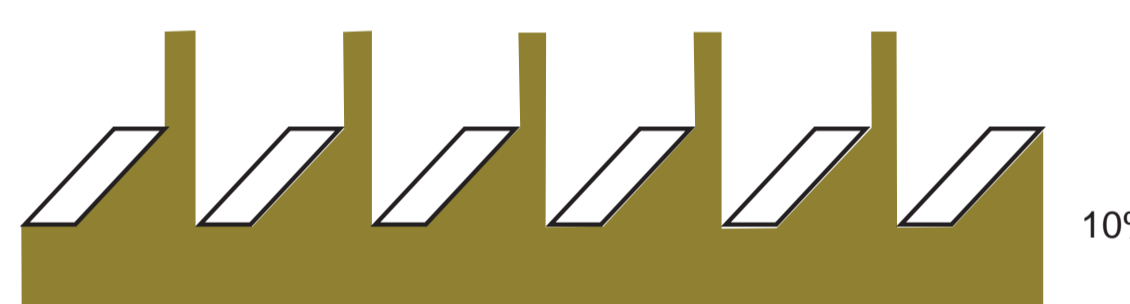


The shades let in different amounts of light from different angles - thus creating different light intensities and different patterns through the shadows they cast.



0%

The shades are placed in different positions to each other creating a grid of shadows.



10%



65%

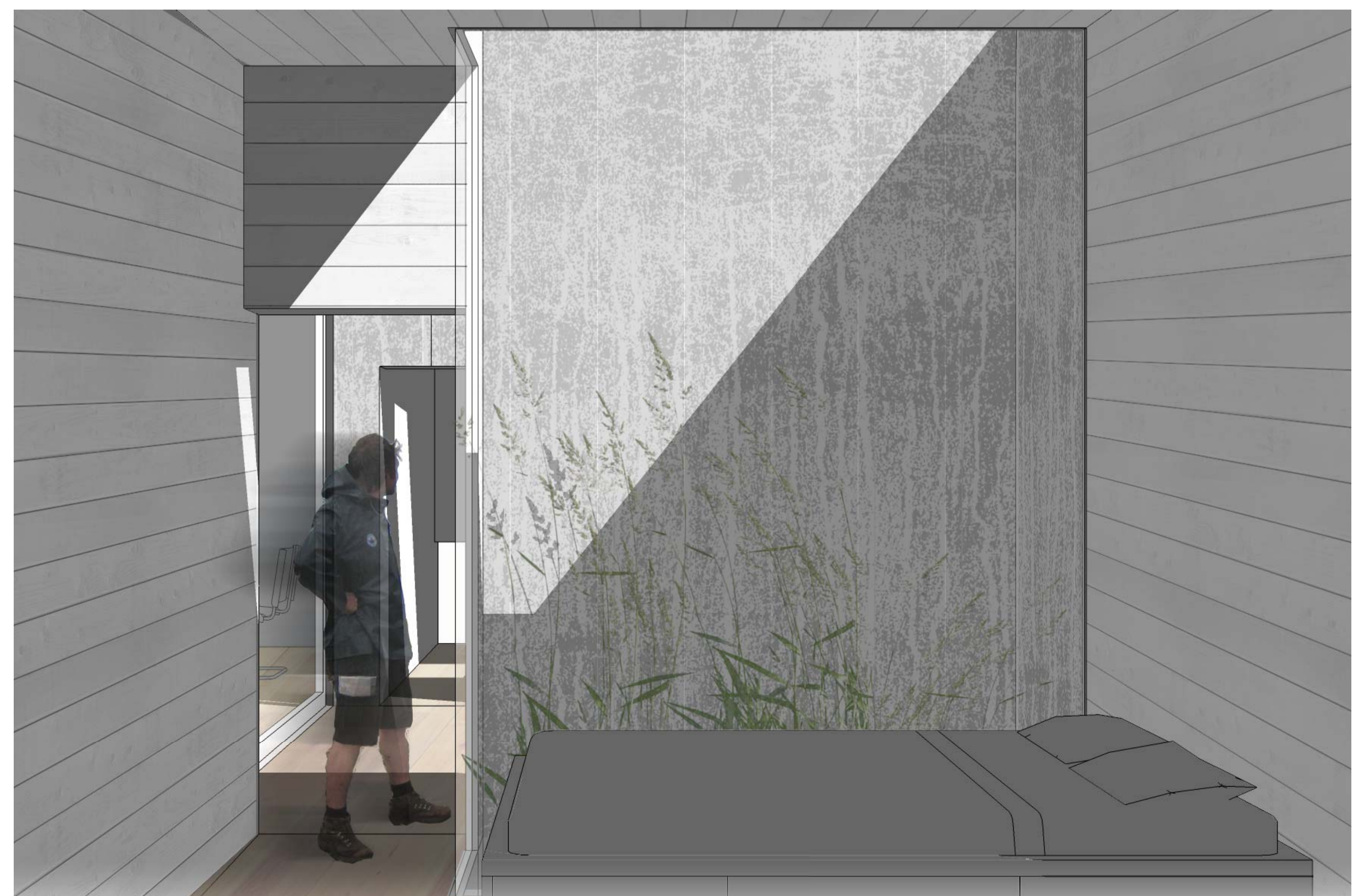
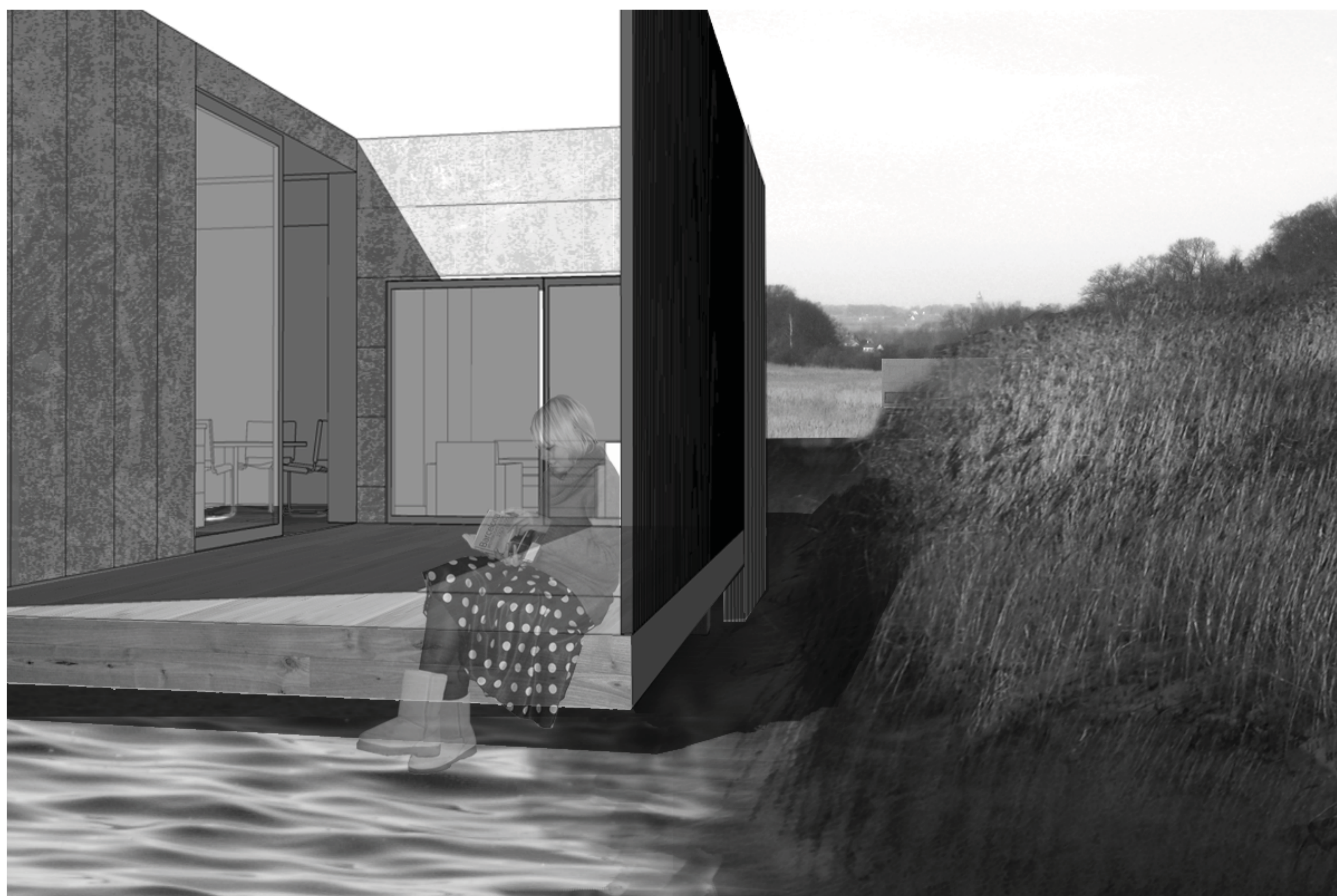
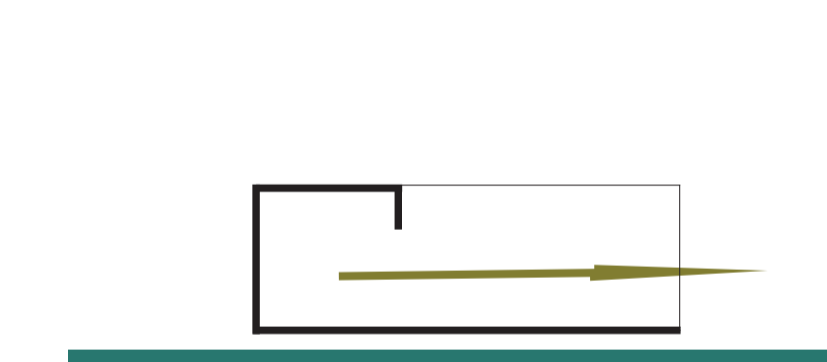
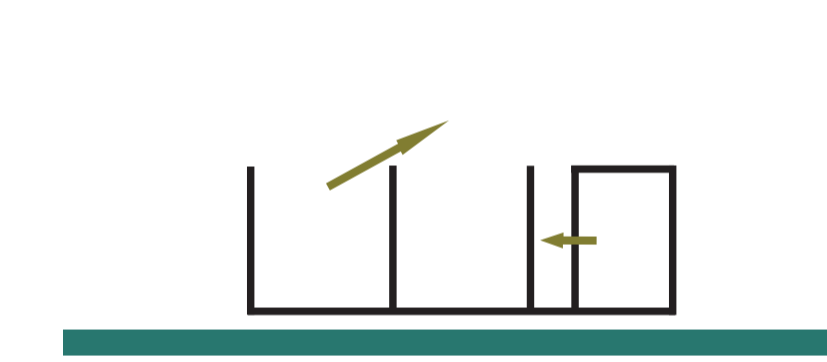
VIEW

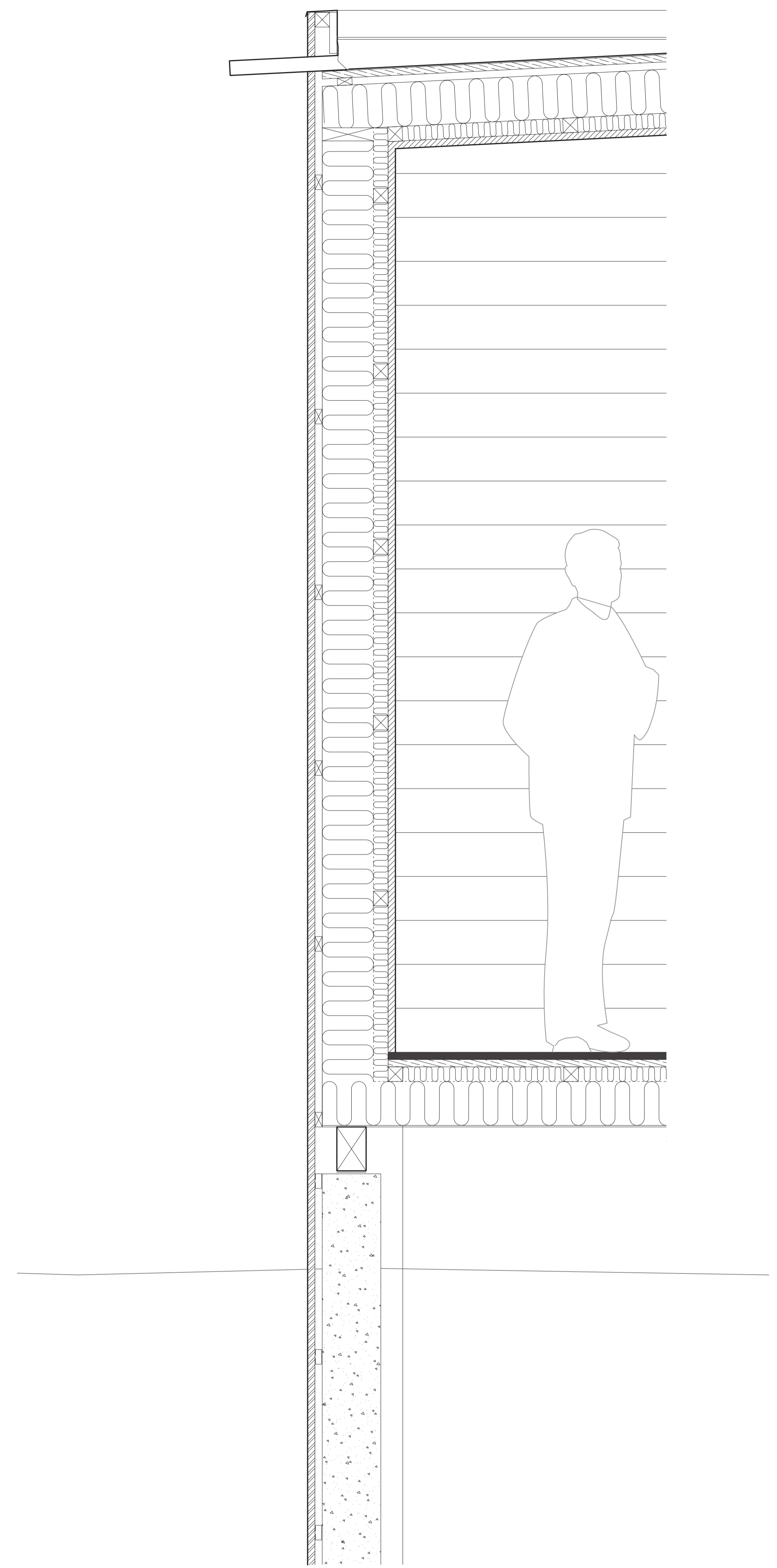
The views in the rooms are to be a surprise. The views of the house are focused on the near surroundings like: the lake grass and the sky seen at the same time from the outside as the inside. A view of the sky and the water and lake grass within the sleeping rooms.

The bathroom offers a view of a disappearing staircase crating the need for further investigation.

There are views through the kitchen to the outside creating a sense of a coherent space. The sunshades give different views according to your point of view.

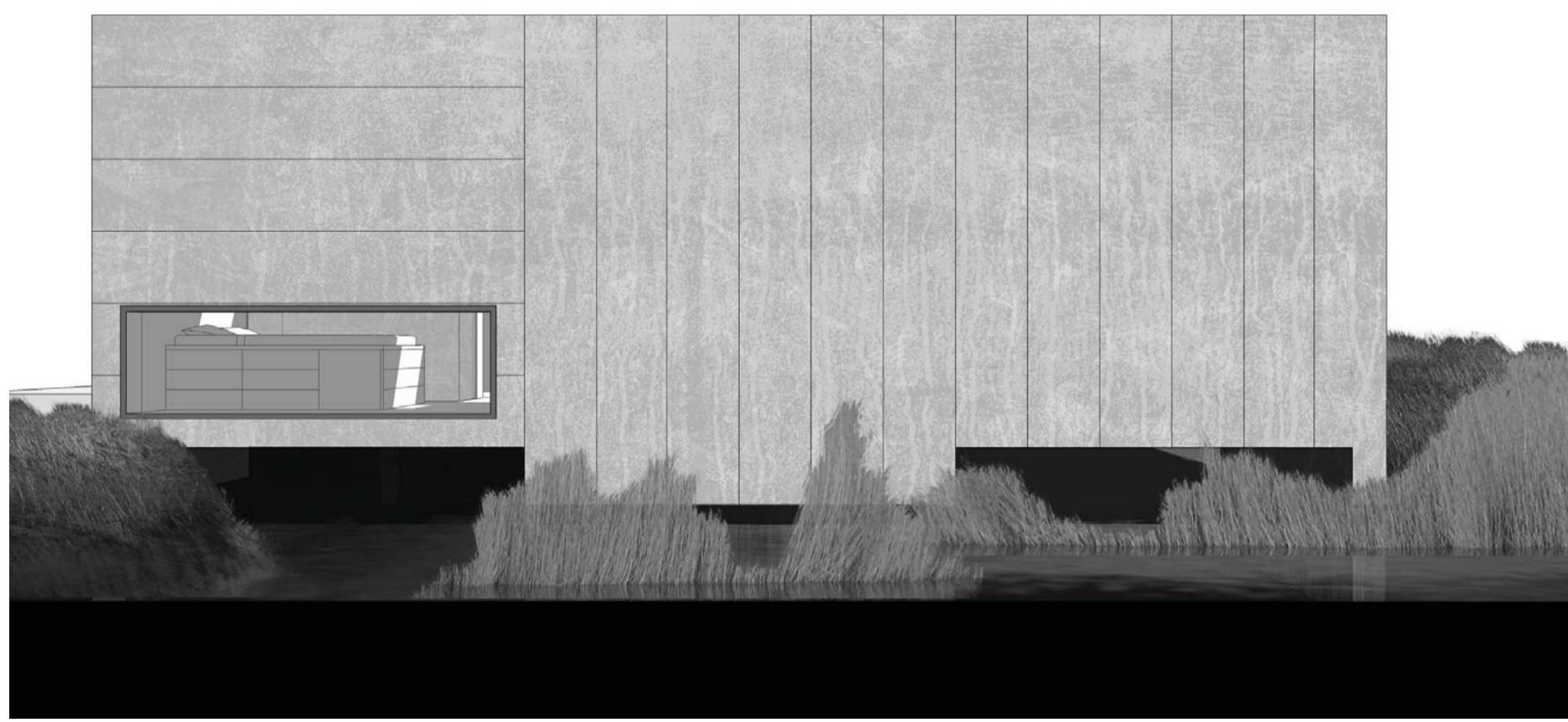
Finally there is the framing view of the lake



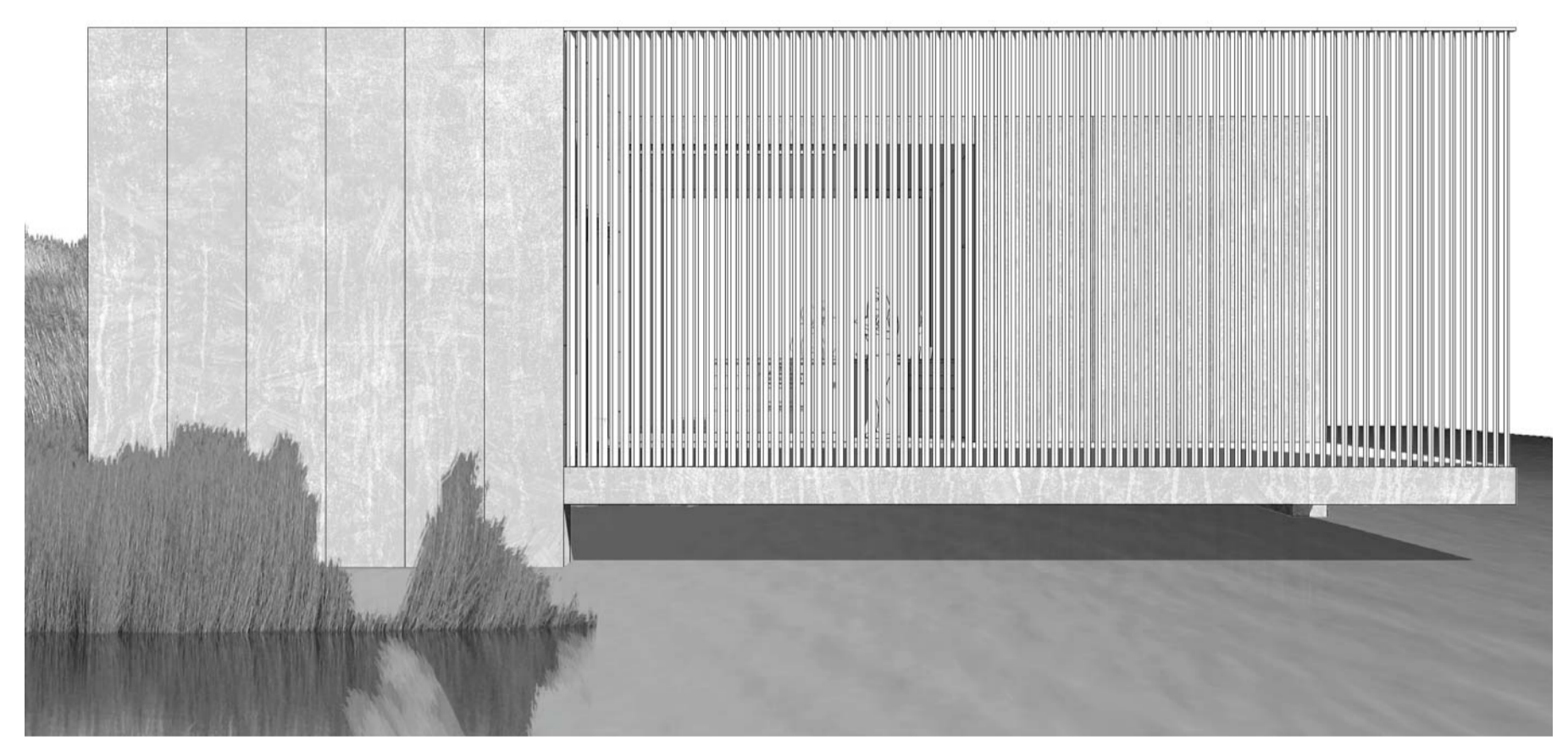


SECTION B-B 1:50

1:10



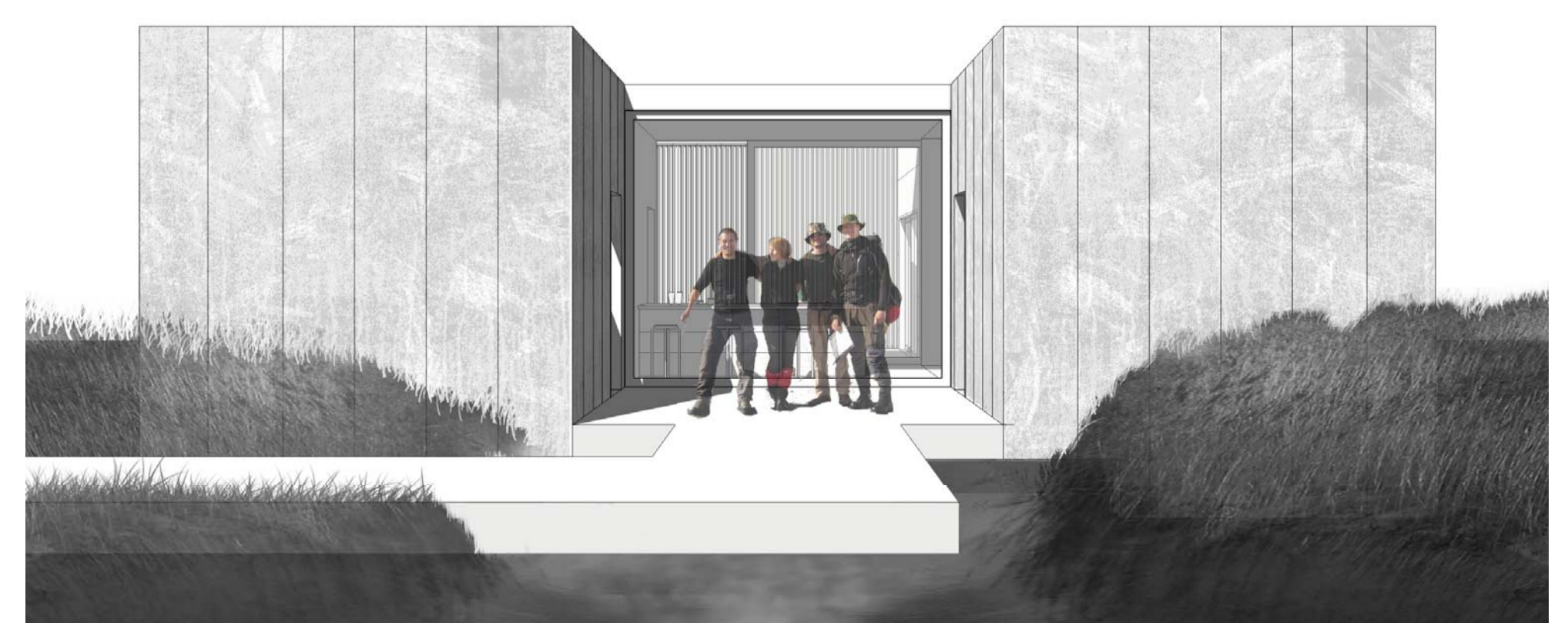
NORTH 1:50



WEST 1:50



SOUTH 1:50



EAST 1:50